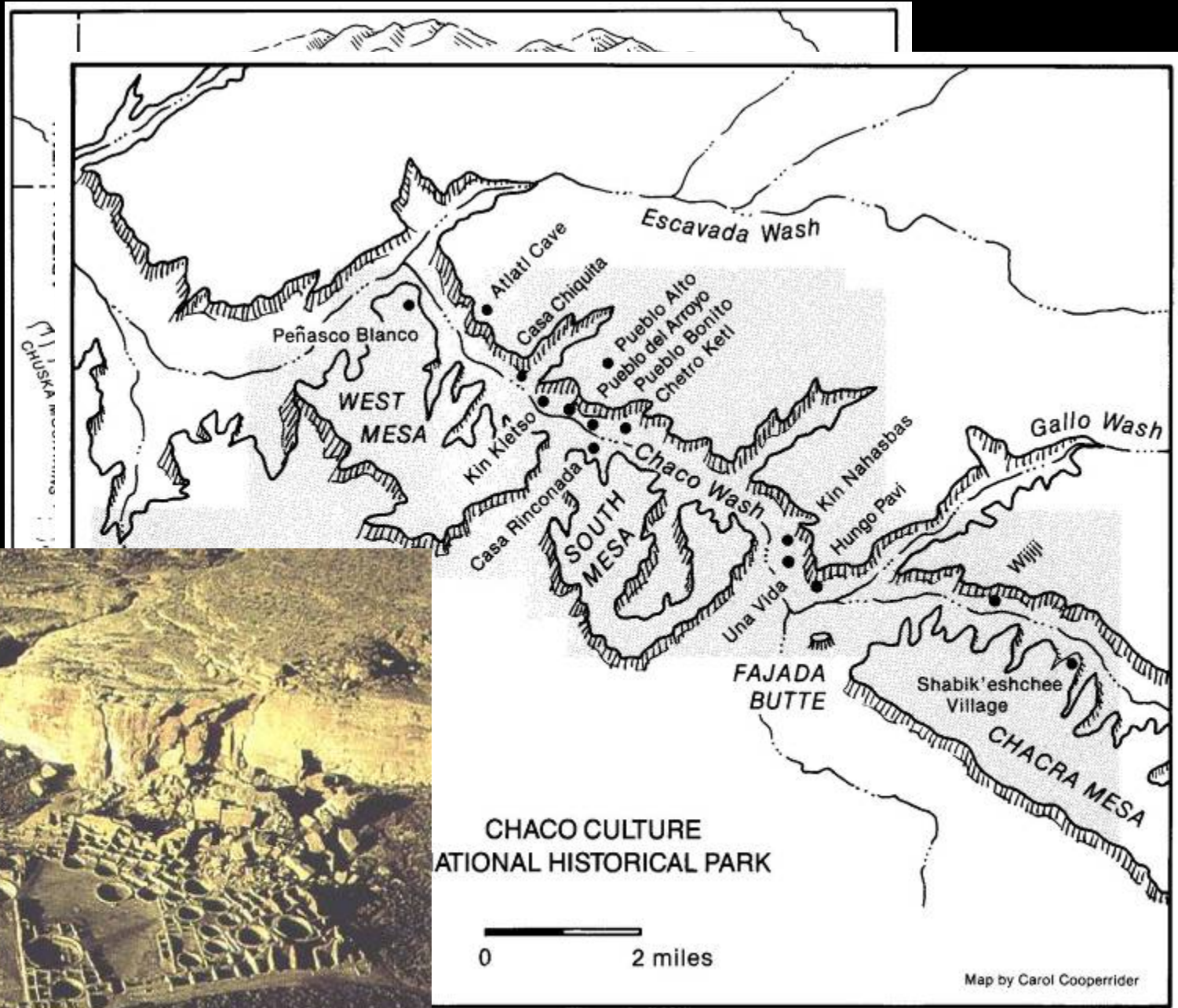


Pottery Decoration and Production: Aztec Ruin

Donna Glowacki
Department of Anthropology





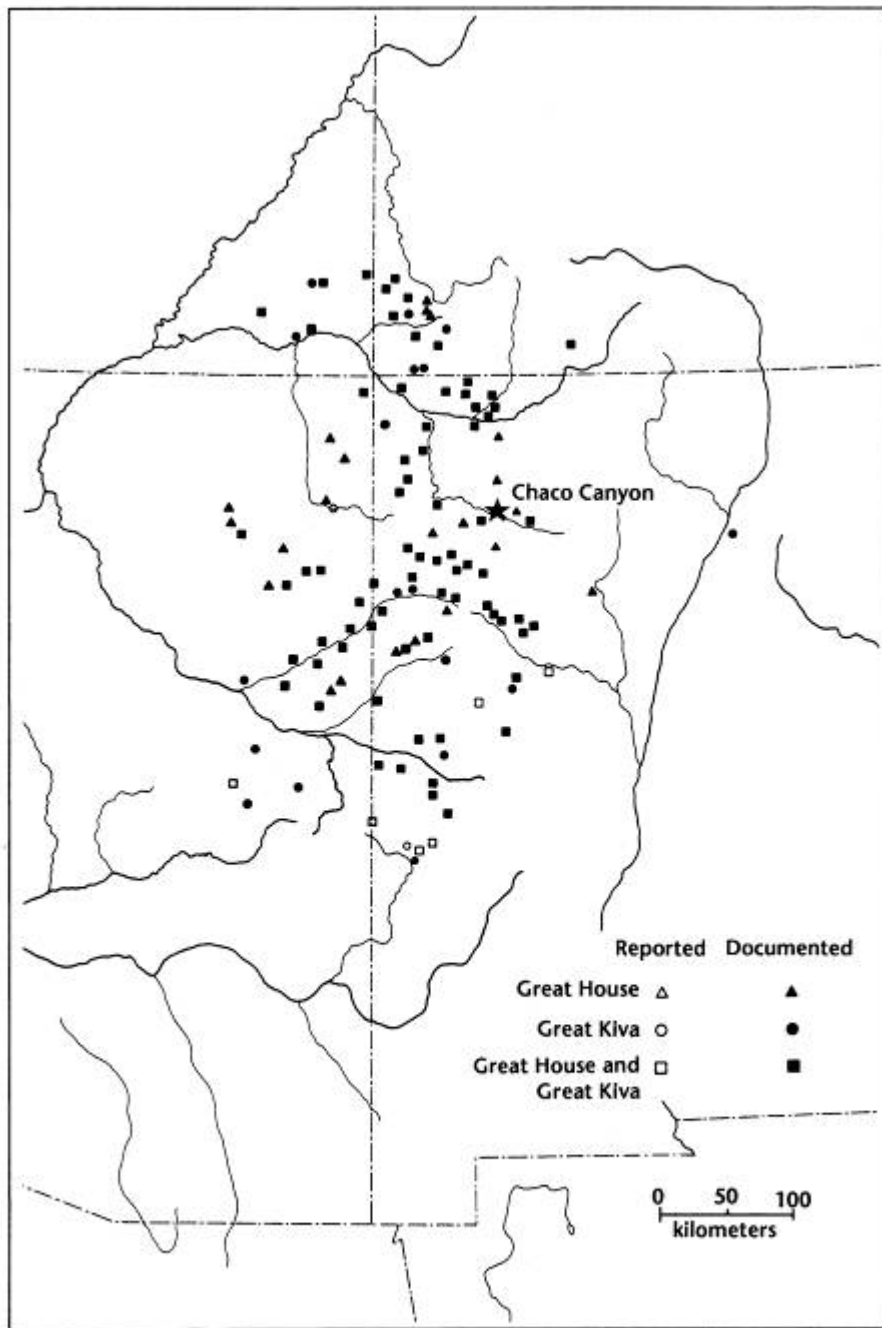


Figure 3.10. The Chaco region as indicated by great houses, great kivas, and the Chacoan community settlement pattern.

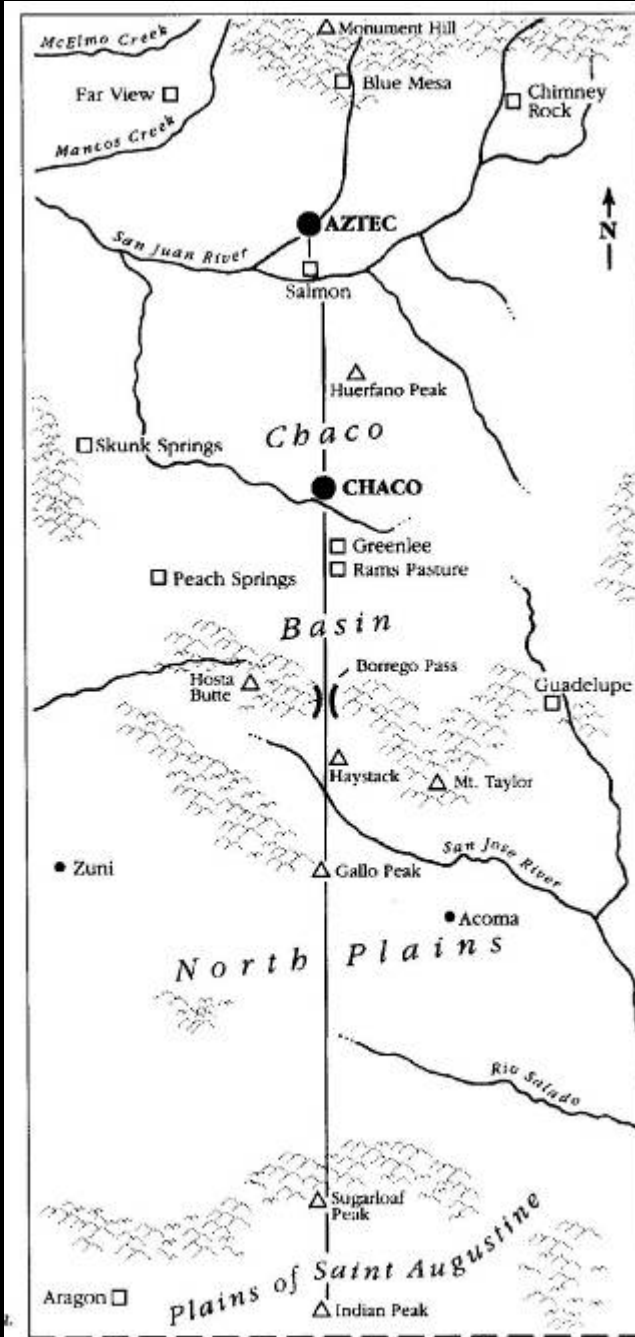
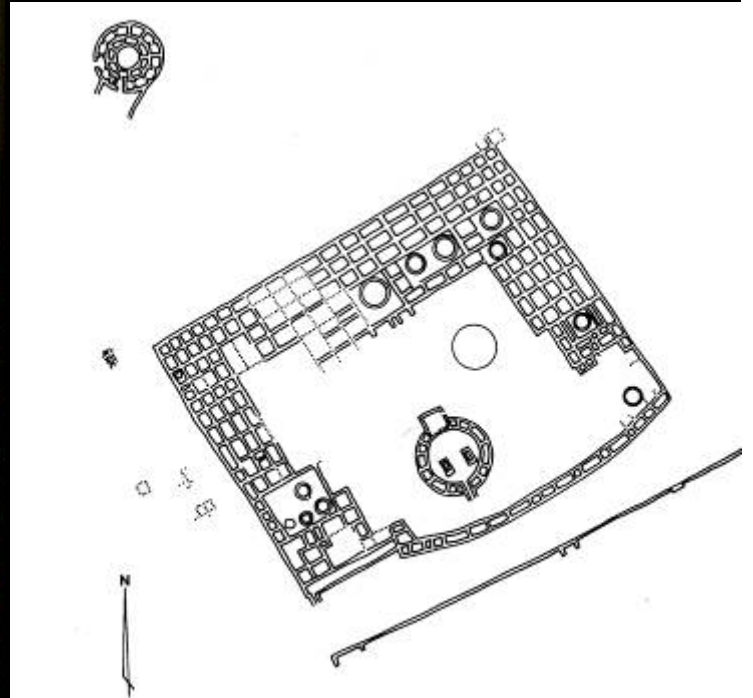
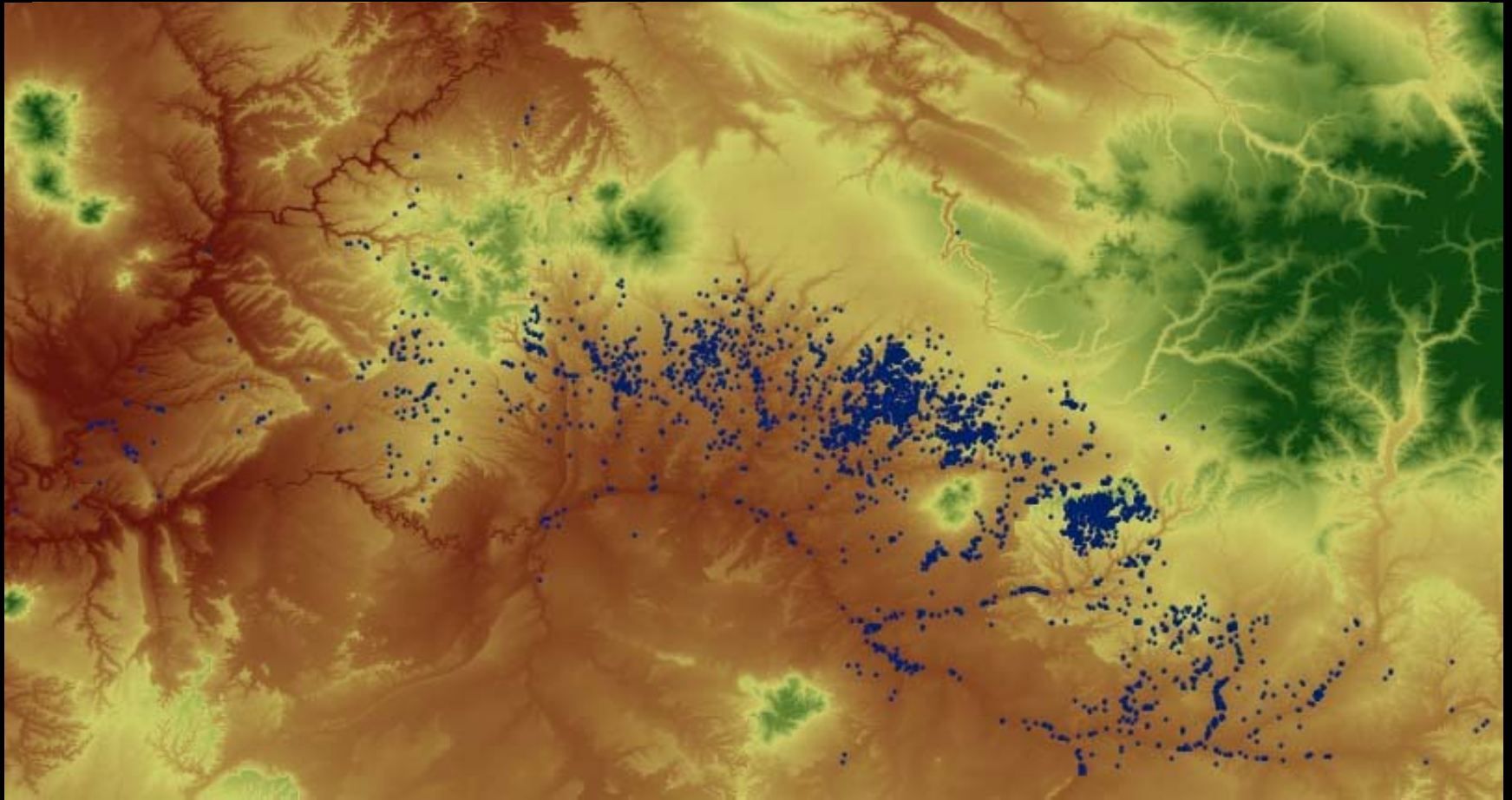


Figure 4.2. The Chaco Meridian. A, North half; B, south half.

Aztec West



Northern San Juan Region



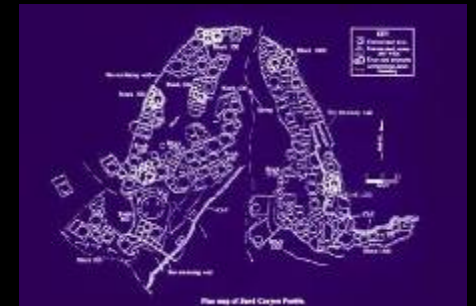
New Types of Community Centers



Easter Ruin



Hovenweep



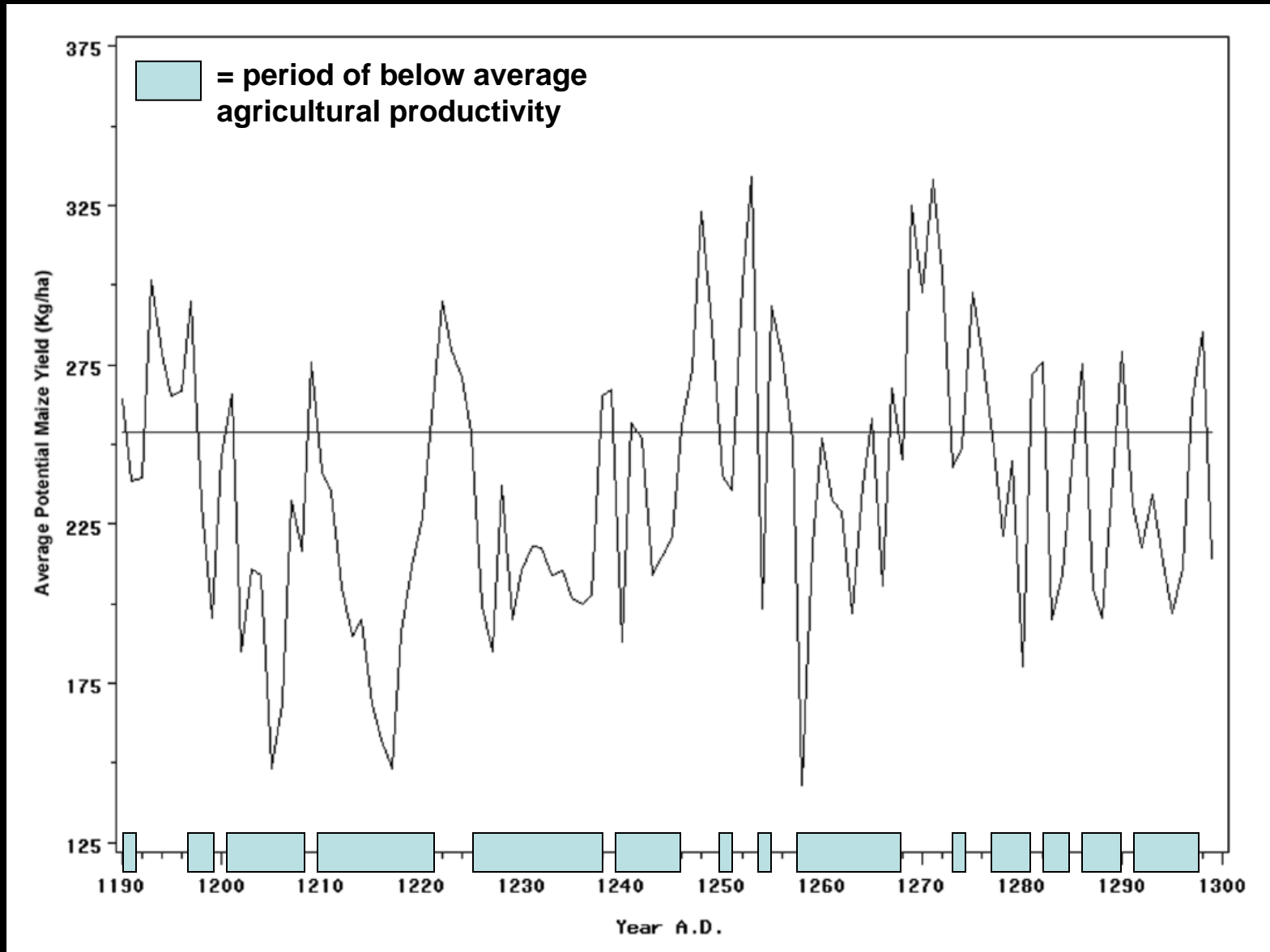
Sand Canyon Pueblo

Yellow Jacket Pueblo



Long House

Potential Agricultural Productivity

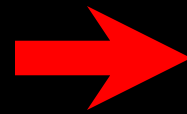


Varien et al. 2007: Figure 8

Architectural Changes Imply Religion-based Reorganization

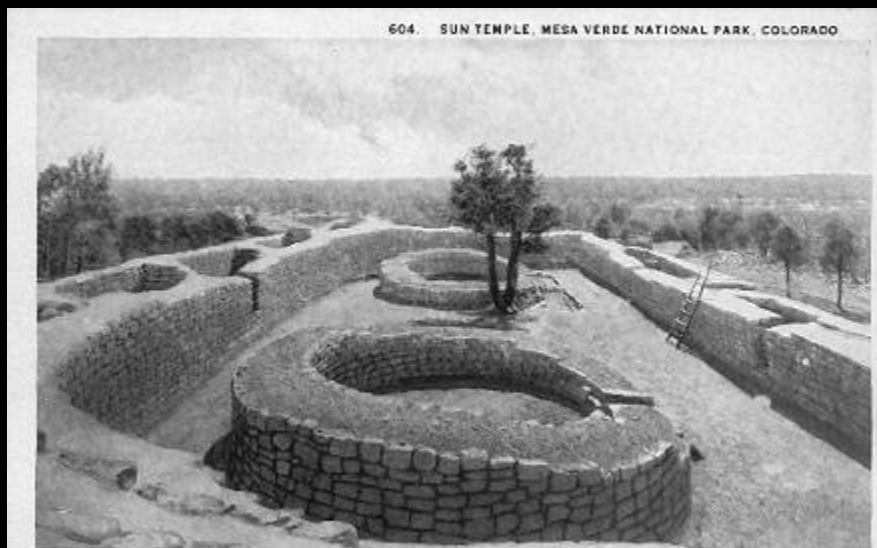


Great Kivas

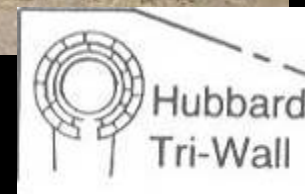


Plazas

Multi-walled Structures

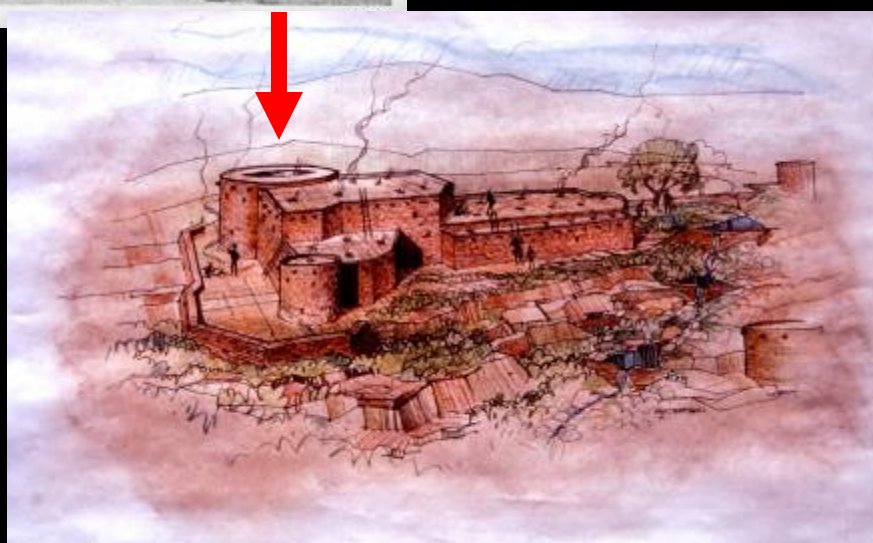


Sun Temple, MVNP

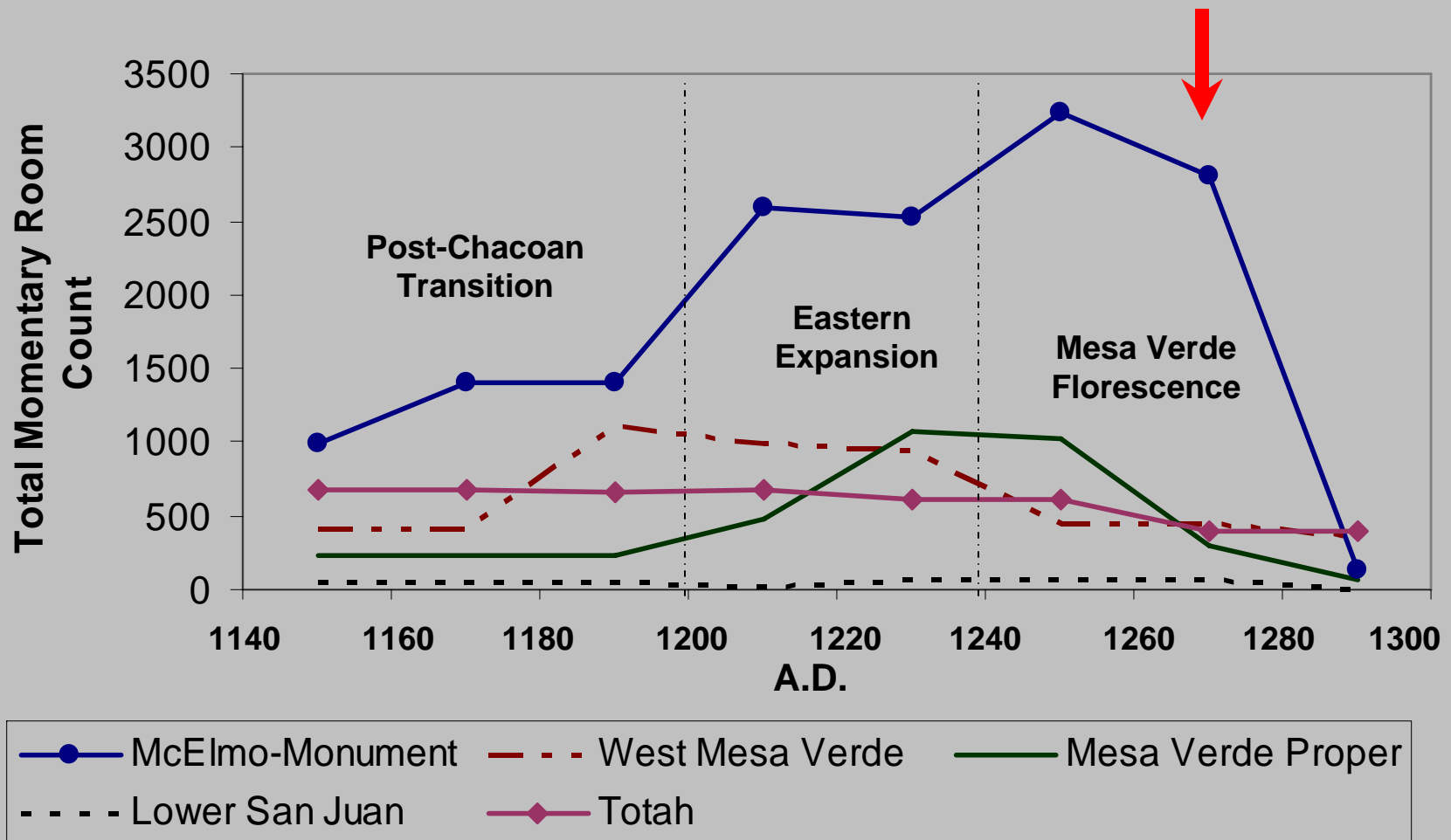


Aztec

**Yellow Jacket
Great Tower**



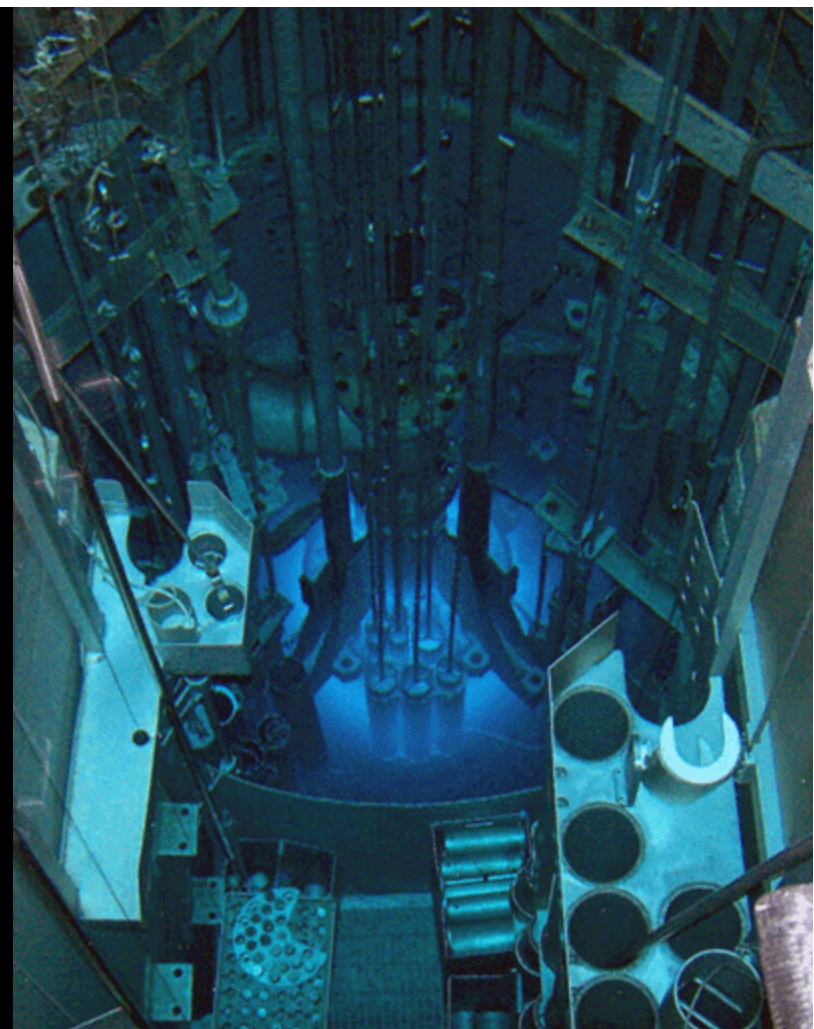
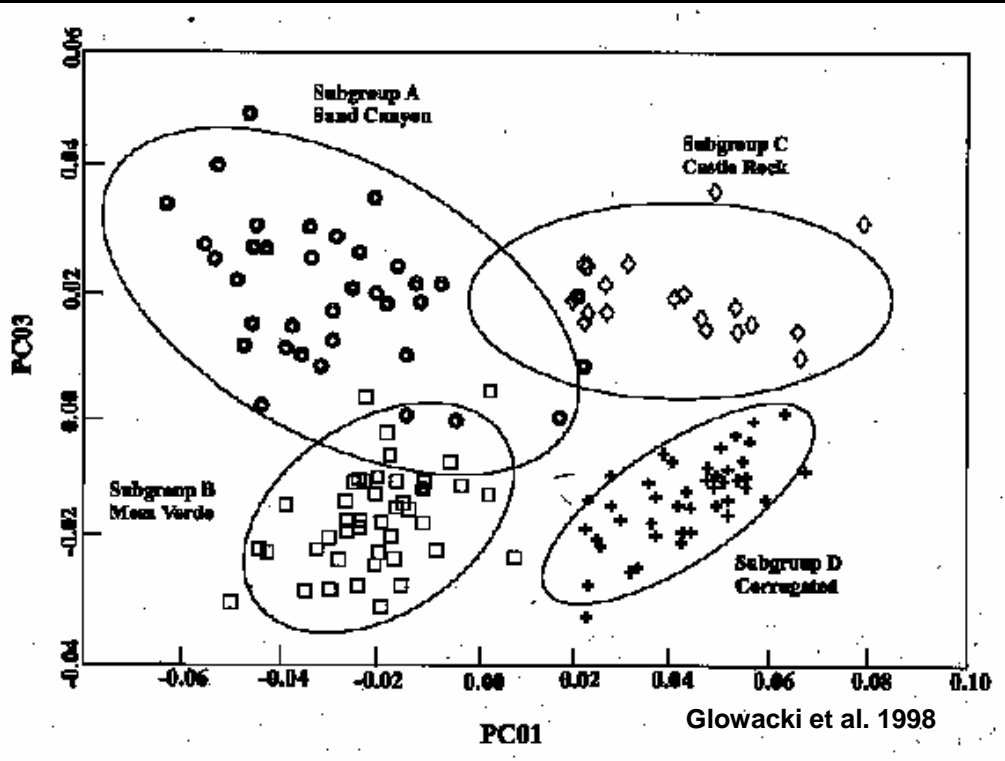
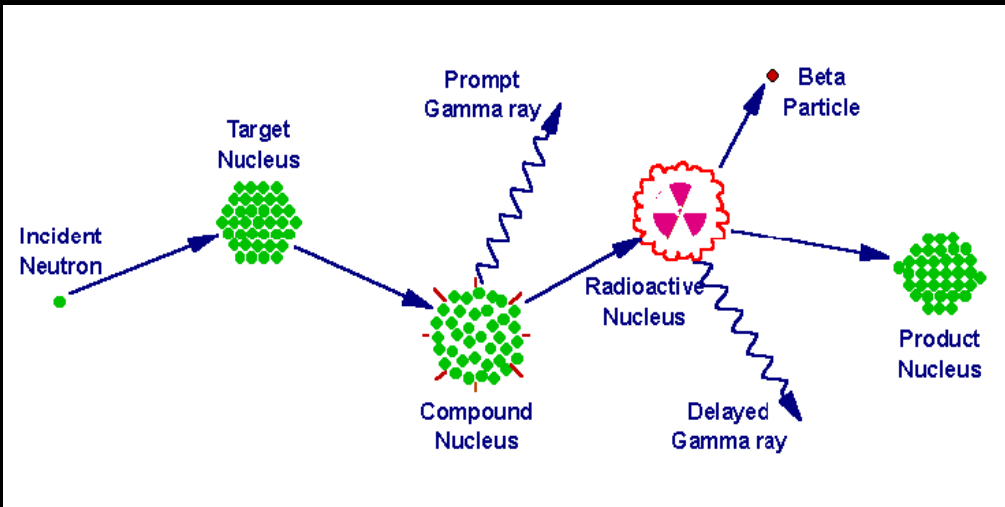
Subregional Occupation Histories, A.D. 1140-1300



Glowacki 2006

What were the social
circumstances leading to the
regional depopulation?
What is Aztec's role in all this?
Where does it fit in?

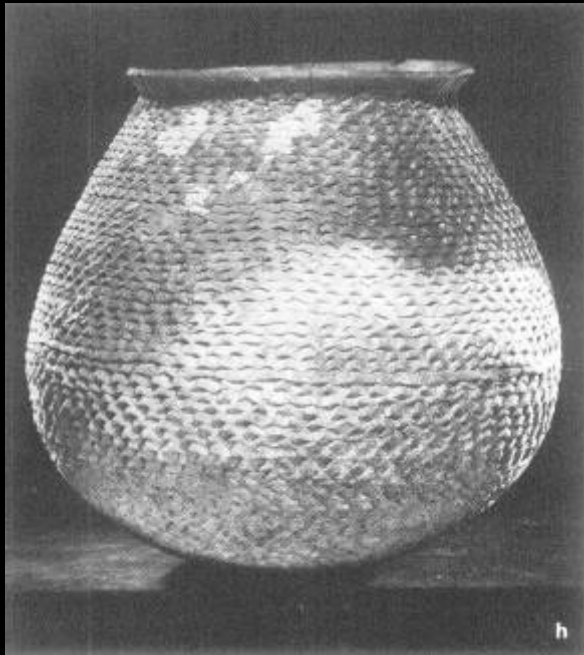




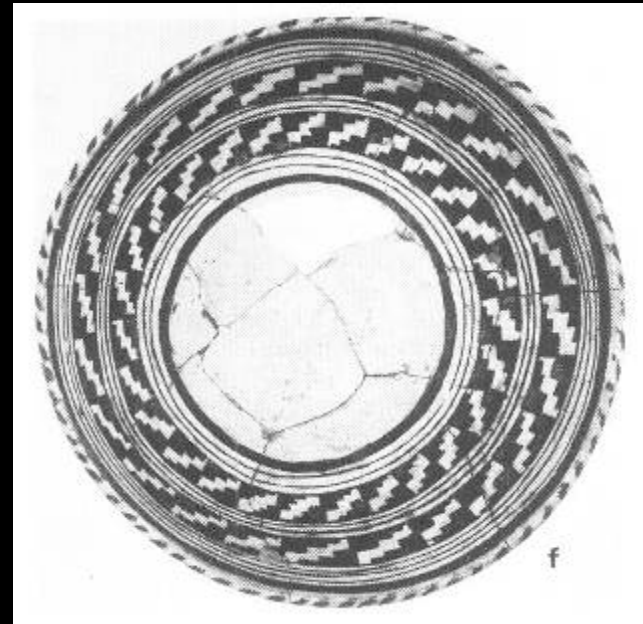
MURR website

Instrumental Neutron Activation Analysis

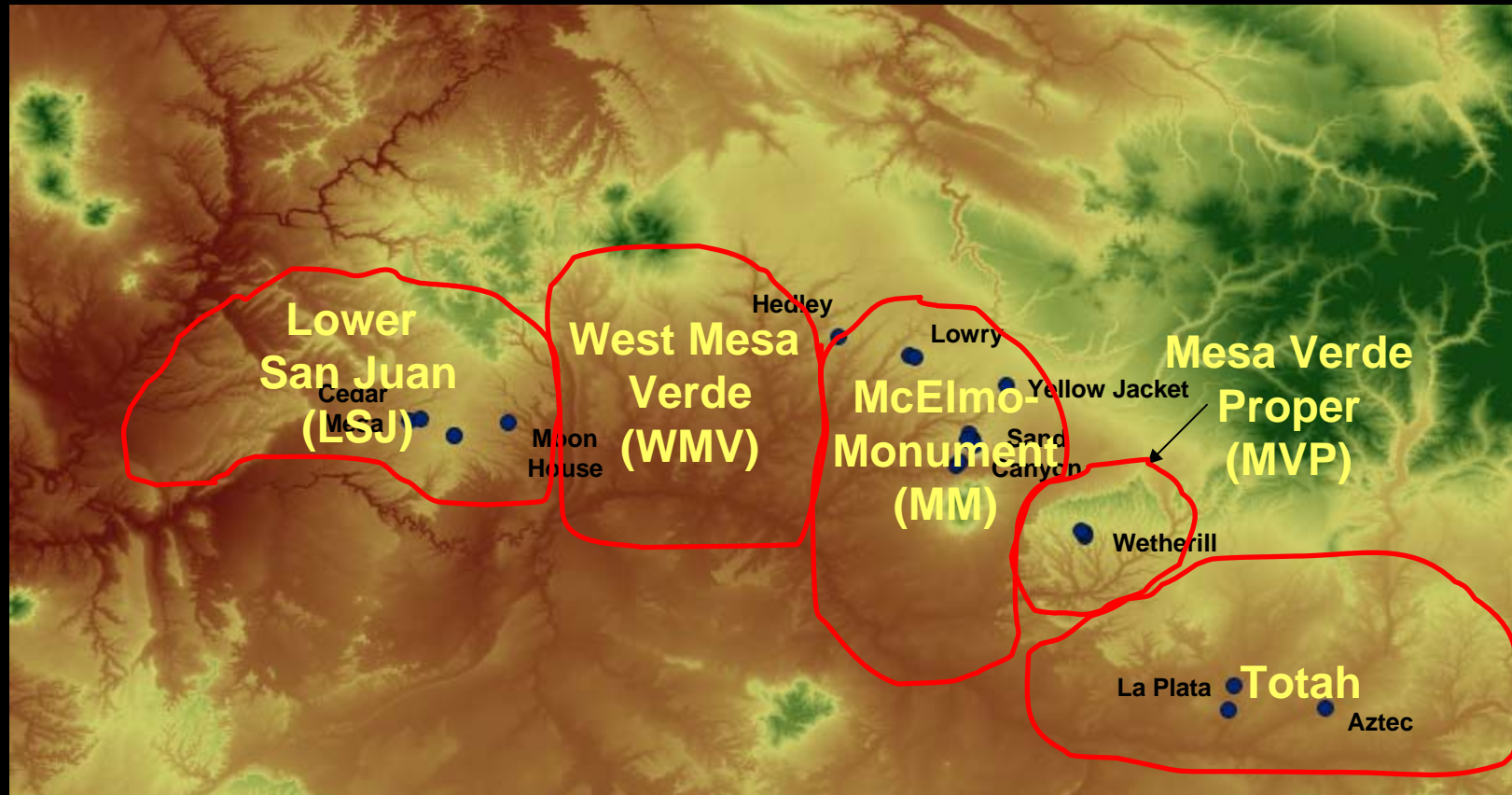
**Mesa Verde Corrugated
(A.D. 1100-1300)**



**Mesa Verde Black-on-white Bowls
(A.D. 1150-1300)**



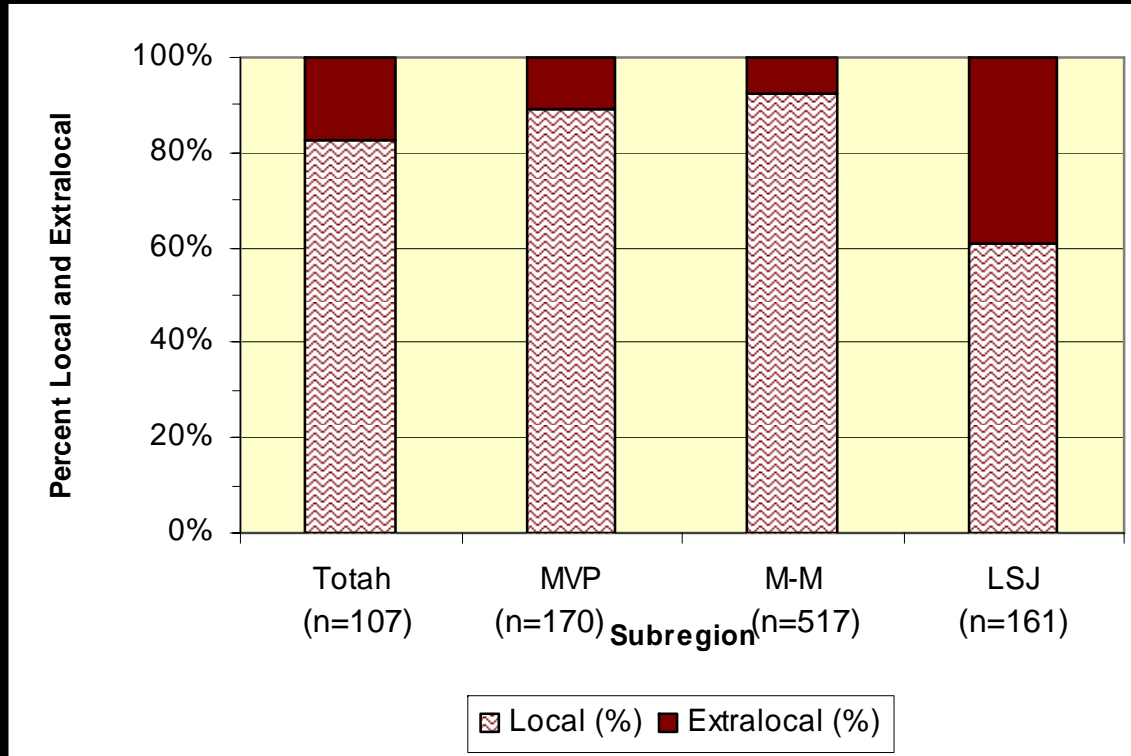
Sites Sampled for INAA



Compositional Groups by Subregion

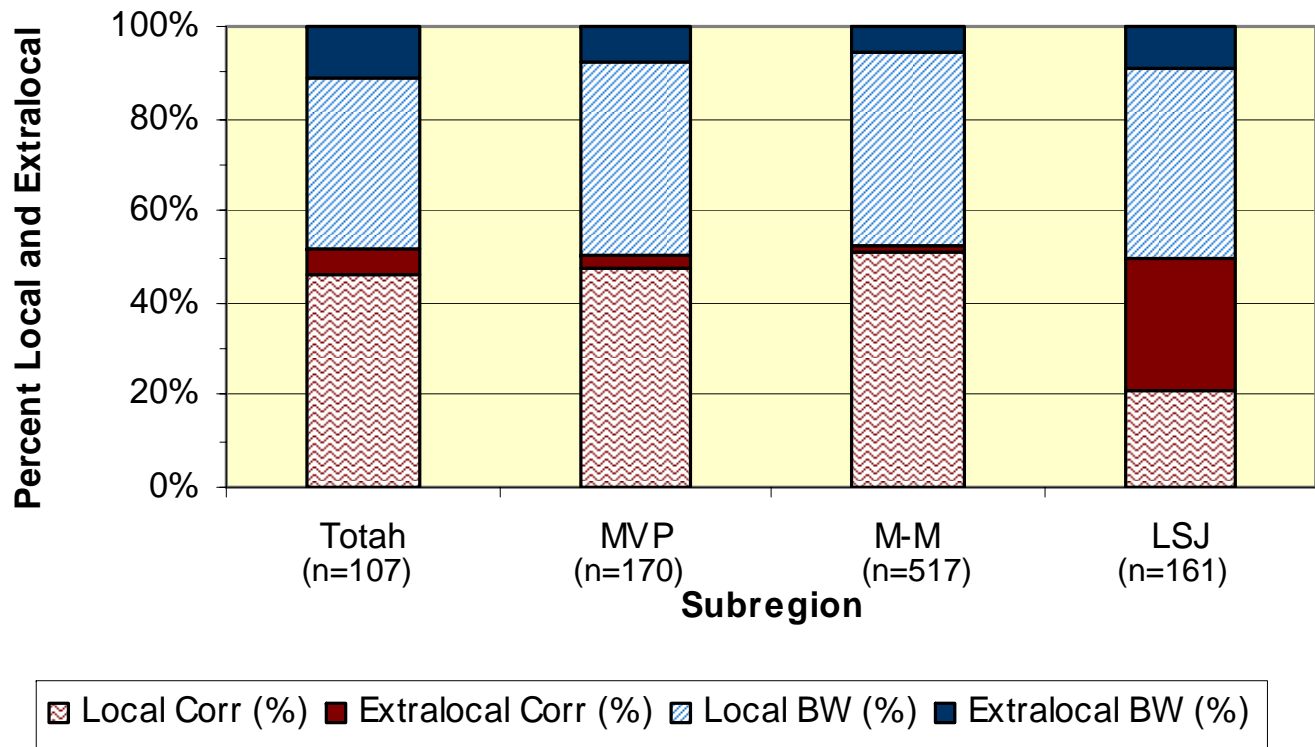
Subregion	No. of Compositional Groups	Descriptions	Clay Sources
Total	2	Mixed Ware (n=74) BW (n=38)	Kirtland Menefee, Morrison
Mesa Verde Proper	2	BW (n=96) COR (n=91)	Menefee Menefee
McElmo-Monument	6	2 BW (n=126, 87) McElmo BW (n=46) 2 COR (n=148, 53) Mixed Ware (n=61)	Dakota Mancos, Alluvial Dakota Dakota
Lower San Juan	2	BW (n=72) COR (n=24)	Chinle Chinle, Cutler
Outliers	-	Mixed Ware (n=39)	

Local versus Extralocal Pottery Consumption by Subregion

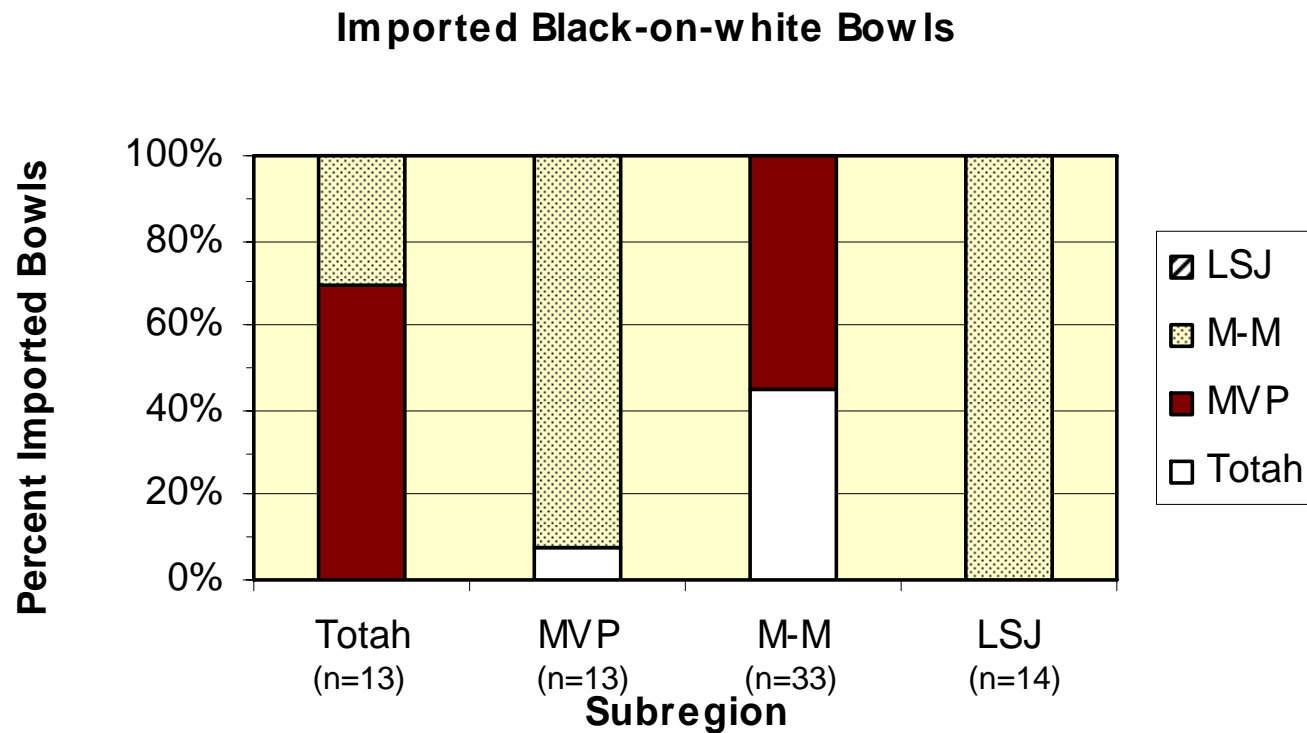


Glowacki 2006

Local versus Extralocal Consumption by Ware and Subregion



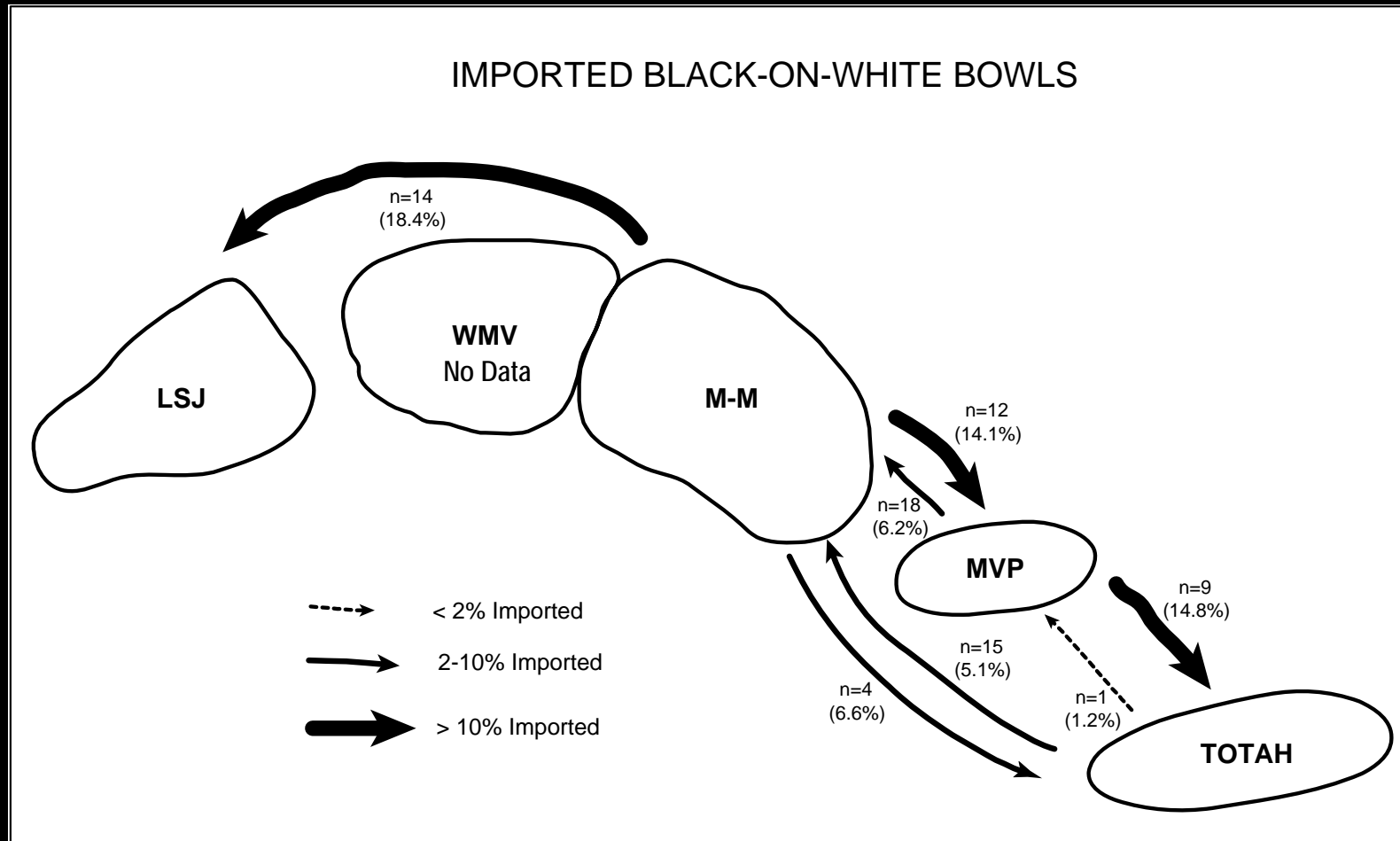
Imported Mesa Verde Black-on-white Bowls by Subregion



Glowacki 2006

Mesa Verde

Black-on-white Bowl Circulation



Glowacki 2006

Social Connections: Feasting



Eastern Northern San Juan Bowl Circulation



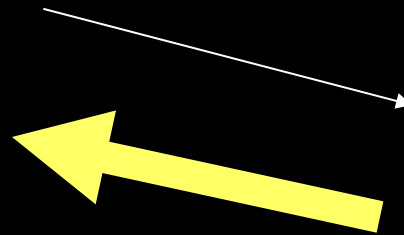
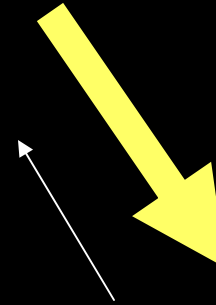
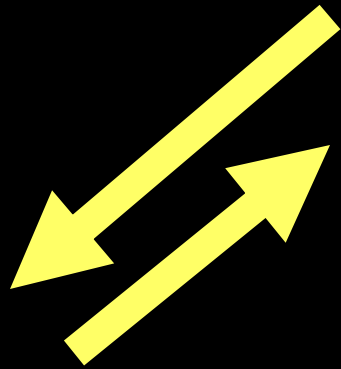
Mesa Verde Proper



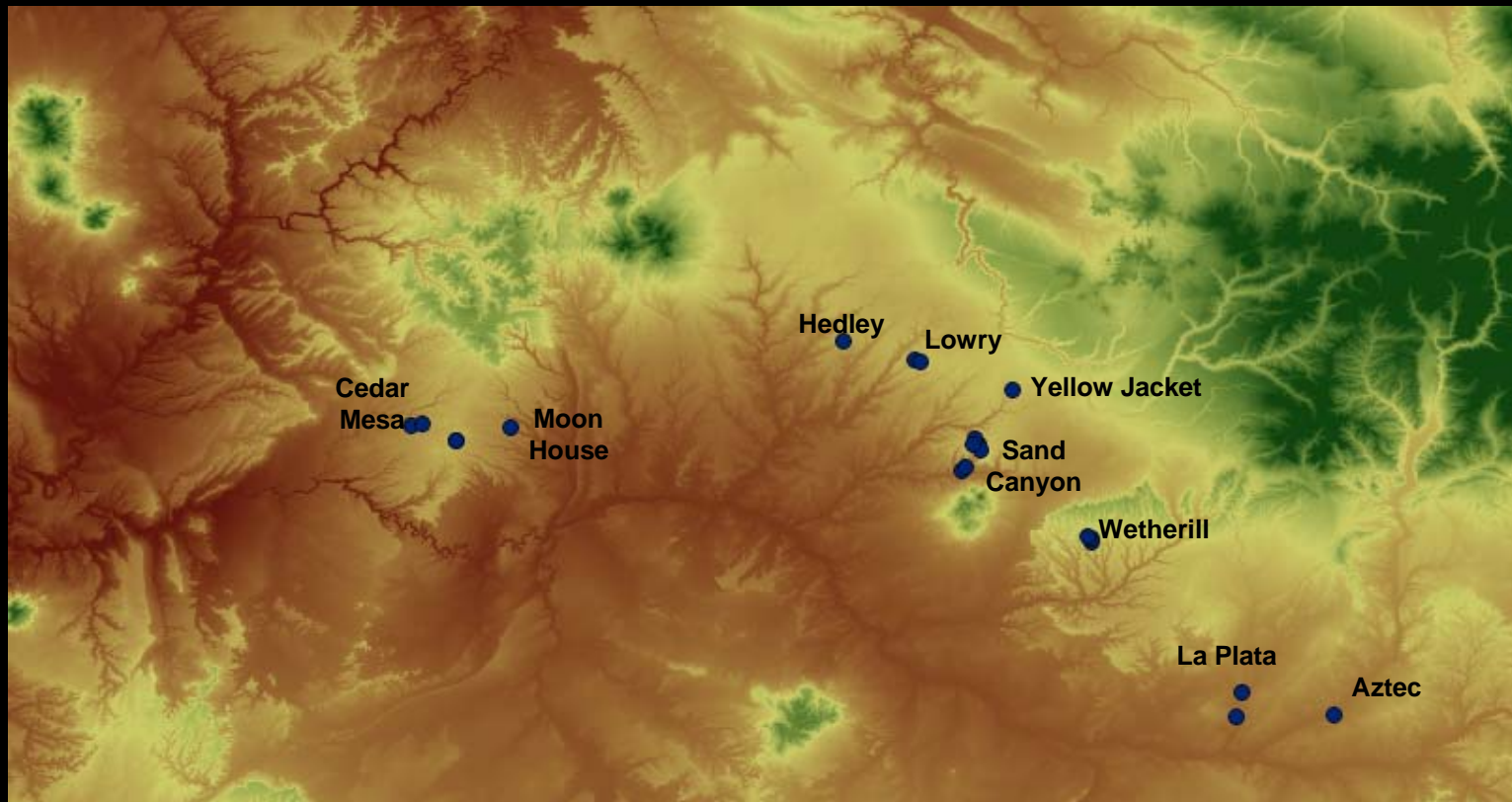
McElmo-Monument



Totah - Aztec Ruins



INAA and PIXE: What's Next?



- INAA: Aztec, Comb Ridge locality, and Cedar Mesa/Kayenta connections
 1. FYI: I have portions of samples submitted to MURR for INAA if interested for ND's NAA...
- PIXE: Aztec West and East
 1. Questions regarding slip and paint recipes, can correlate with paste composition
 2. Laura Plis...single shot 26 bowls, K-means (2 and 5 grp for slip, paint = 3, 5,